

Elsevier Series Webinar: Research and Societal Impact, Innovation for the future
(1 December 2021)

Dear All,

We cordially invite you to join the following webinar:



Elsevier Expert Series Webinar

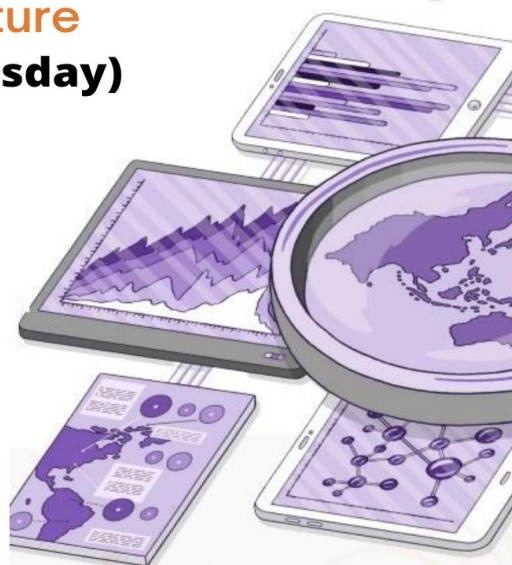
Research and Societal Impact
ELSEVIER Innovation for the Future



1 December 2021 (Wednesday)

3 - 5 pm

Platform 



Speakers



Ylann Schemm
Director - Elsevier Foundation

As Director of the Elsevier Foundation, Ylann Schemm drives technology-enabled partnerships to advance diversity in science, build research capacity and support global health around the world. She has been an integral part of the Foundation's growth since joining as a Program Officer in 2008. In addition, Ylann currently serves as Elsevier's Director of External Partnerships, building on 15 years in corporate relations and responsibility roles and focusing on key technology, gender and sustainability collaborations. In August 2020, Ylann was appointed the Chair of the Executive Council of Research4Life, a UN-publisher partnership to bridge access gaps for researchers and doctors in developing countries.



Smita Kuriakose
Senior Economist - World Bank

Smita Kuriakose is a Senior Economist in the Finance, Competitiveness and Innovation Global Practice in the World Bank. She is currently based in the Inclusive Growth and Sustainable Finance Hub where she leads the work program on private sector development, innovation, and entrepreneurship. Her expertise is in science, technology & innovation policy, skills development, business environment, and competitiveness. Her work has covered over 20 countries. She has led regional flagships publications in the Europe and Central Asia, East Asia and Pacific and Africa regions on innovation and entrepreneurship issues and multi-sectoral operations of both Development Policy and Investment Policy Instruments. In East Asia and Pacific region, she has led policy dialogues on innovation and entrepreneurship in China, Malaysia, Vietnam and Thailand. Smita holds graduate degrees in Economics from the University of Maryland, College Park in the US and the Delhi School of Economics in India.

Remark



Saurabh Sharma
Vice President (APAC) Research Solutions - Elsevier

REGISTER AT



USSDC points (Lifelong Learning & Information Management) for UTAR Students
CPD: 2 hours for UTAR Staff

CONTACT US

Main Library (Kampar Campus)
Mr Chang | changtc@utar.edu.my
Mr Nasrul | nasrul@utar.edu.my

Mary KUOK Pick Hoo Library (SL Campus)
Pn Suraya | surayayu@utar.edu.my
Pn Zuliana | zuliana@utar.edu.my

UTAR HOSPITAL DONATION

"Give so others can benefit -Your contribution can change lives". We appeal to you to contribute generously for the good cause of the university in higher education and medical care initiative.



<https://www.utar.edu.my/uef/>

Please scan the **QR Code** in the poster or click the link <https://tinyurl.com/4f4rnk2m> for pre-registration, with your UTAR email.

For any further enquiries, please contact Mr Chang (changtc@utar.edu.my) / Mr Nasrul (nasrul@utar.edu.my) for Kampar Campus or Pn Suraya (surayayu@utar.edu.my) / Pn Siti Zuliana (zuliana@utar.edu.my) for Sungai Long Campus.

Thank you.

Regards,

UTAR Library
25 November 2021